



www.colefabrics.com



Polyester Satin
8913P



Polyester Satin 8913P



8910P White

White is a stand alone product. 8910P
It has more available stock widths and different pack sizes.
Please view stock information on our website.



Non Fluorescent
23



Ivory
08



Cream
04



Beige
22



Champagne
03



Gold
06

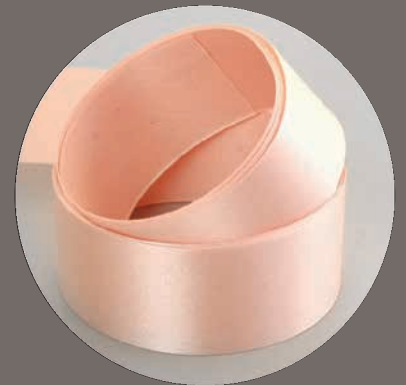


Discontinued,
limited remaining
stock

Mustard Yellow
28



Yellow
14



Peach
16



Polyester Satin 8913P



Orange
11



Tango
26



Pink
15



Fuchsia
21



Red
13



P.O.Box Red
24



Cherry
18



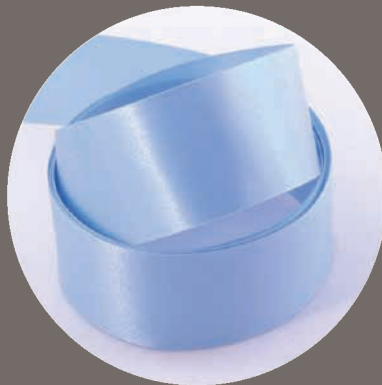
Light Green
20



Green
07



Dark Green
19



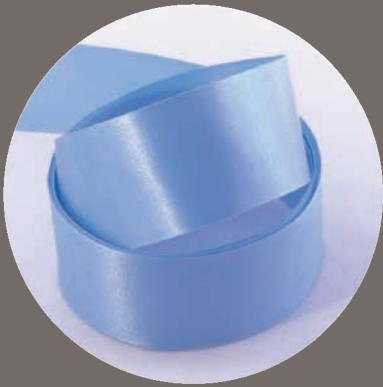
Light Blue
17



Aqua
29



Polyester Satin 8913P



Lake Blue
27



Blue
02



Navy
10



Discontinued,
limited remaining
stock

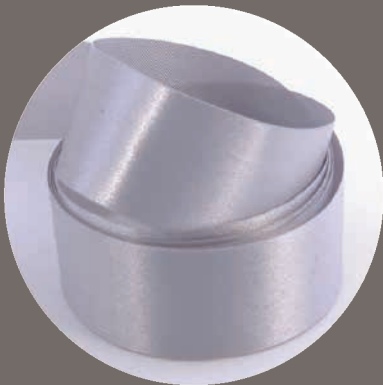
Mauve
30



Purple
12



Light Grey
09



Dark Grey
05



Brown
25



Black
01



STANDARD ROLL LENGTHS



Approx 400 Metre Rolls

Flat Wound

- 10mm
- 15mm
- 25mm
- 30mm
- 35mm
- 40mm
- 45mm
- 50mm
- 60mm
- 70mm
- 100mm

Other roll lengths can be supplied to order.

Please note that not all widths are available in all colours as stock items, refer to the 8913P stock policy for details.

ADDITIONAL OPTIONS



Cut Pieces



C-CUT

U-CUT WITH STICKY PADS



U-CUT



T-CUT



S-CUT



Other angle cuts available - just let us know what you need.

FLANGE OPTIONS



Cardboard Flanges



Crystal Flanges

BOW OPTIONS



Ribbons can be made into pre-tied bows.



Printed Ribbon

- Flat Screen Ink Print
Up to 7 Colours
- Flat Screen Foil Print
Up to 3 Colours
- Puff Ink Print
Up to 5 Colours
- Puff Foil Print
Up to 3 Colours
- Transfer Print
Full colour.

8913P Slit Edge Single Sided Polyester Stock Policy

We manufacture a colour range of 31 colours in a selection of widths (Quality 8913P)

Primary Stock Colours



* White is a stand alone product. (8910P)
It has more available stock widths and different pack sizes.
Please view stock information on our website.

We hold these colours in stock in the widths specified.

Stock widths available in: 10mm, 15mm, 20mm, 25mm, 30mm, 35mm, 40mm, 45mm, 50mm, 60mm, 70mm, 100mm

Stock roll length: approx. 400m

These colours are planned into a 5 working days slit cycle so if the stock is unexpectedly exhausted they will be replaced within 5 working days.

The minimum order quantity for Non standard widths 100sq. Mtrs (e.g. 12mm - 8,000 mtrs; 38mm 2,800 mtrs)

We have created a calculator on the 8913P product page to help you work out the minimum order metres if you require a non-standard width.

Click on web-address to access: <https://www.colefabrics.com/sqm-calculator>

Secondary Stock Colours



* Discontinued, limited remaining stock.

We hold these colours in stock in the widths specified.

Stock widths available in: 10mm, 15mm, 25mm, 45mm, 70mm, 100mm

Stock roll length: approx. 400m

These colours are planned into a 10 working days slit cycle so if the stock is unexpectedly exhausted they will be replaced within 10 working days.

The minimum order quantity for Non standard widths 150sq. Mtrs (e.g. 12mm - 12,000 mtrs; 38mm 4,000 mtrs)

We have created a calculator on the 8913P product page to help you work out the minimum order metres if you require a non-standard width.

Click on web-address to access: <https://www.colefabrics.com/sqm-calculator>

Pack Information

Packs of	Widths	Approx	Approx Total Pack
2	10mm, 15mm, 20mm, 25mm, 30mm 35mm, 40mm	2x 400m	800m
1	45mm, 50mm, 60mm, 70mm, 100mm	1x 400m	400m

Stock roll length: approx. 400m
Shorter rolls maybe supplied.