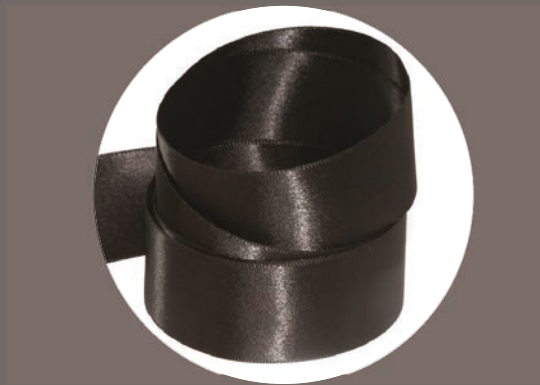




www.colefabrics.com



608 Single Sided Woven Edge



638 Double Sided Woven Edge



668 Grosgrain Woven Edge
665 Grosgrain Woven Edge



Polyester Satin



White
910



Bridal
101



Oyster
135



Cream
130



Cucumber
723



Camisole
430



Melba
320



Tuscan
240



Sunflower
270



Jasmine
210



Babe
440



Rosa
450



Polyester Satin



Lipstick
460



Beauty
480



Paris Pink
470



Scarlet
850



Cranberry
880



Merlot
860



Claret
870



Serenade
490



Passion
840



Fizz
835



Blaze
830



Tango
340



Polyester Satin



Sand Dune
150



Espresso
180



Cocoa
165



Chestnut
370



Saddle
360



Gold Leaf
160



Nutcracker
170



Heather
555



Thistle
540



Mystic
550



Damson
570



Denim
620



Polyester Satin



Monaco
645



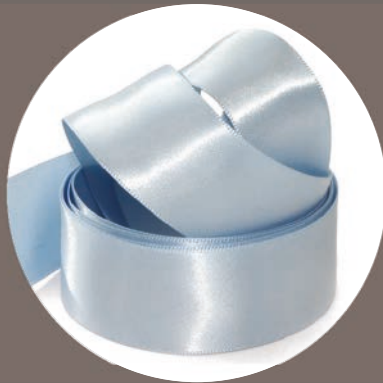
Ink
650



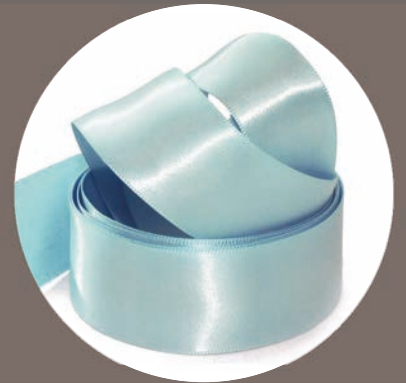
Navy
680



Regal
590



Ice
610



Angel Blue
705



Kingfisher
635



Fathom
715



Ocean
710



Ivy
730



Grass
770



Kiwi
760



Polyester Satin



Zest
725



Eau De Nil
720



Combat
735



Village Green
750



Spruce
785



Bonsai
780



Silver Coin
920



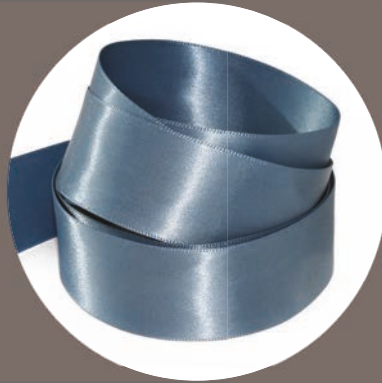
Dolphin
925



Pebble
950



Steel
930



Storm
625



Dark Grey
970



STANDARD WIDTHS (mm)

QUALITY NUMBER 638

Double Face, Woven Edge,
Polyester Satin Ribbon



3 5 7 10



12 15



20 25



38



50

QUALITY NUMBER 668/665

Grosgrain, Woven Edge,
Polyester Ribbon



10 12 15



20 25



38

QUALITY NUMBER 608

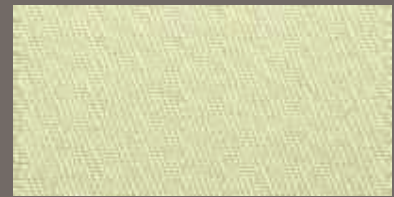
Single Face, Woven Edge,
Polyester Satin Ribbon



25



38



50

Other widths can be supplied to order.

STANDARD ROLL LENGTHS



500 Metre Spools

- 3mm
- 5mm
- 7mm



250 Metre Rolls

Flat Wound

- 10mm
- 12mm
- 15mm
- 20mm
- 25mm
- 38mm
- 50mm



100 Metre Rolls

(Quality 608 Only)

Flat Wound

- 25mm
- 38mm
- 50mm

Other roll lengths can be supplied to order.

FLANGE OPTIONS



Cardboard Flanges



Crystal Flanges

ADDITIONAL OPTIONS



Cut Pieces



C-CUT

U-CUT WITH STICKY PADS



U-CUT



T-CUT



S-CUT



Other angle cuts available - just let us know what you need.



Printed Ribbon

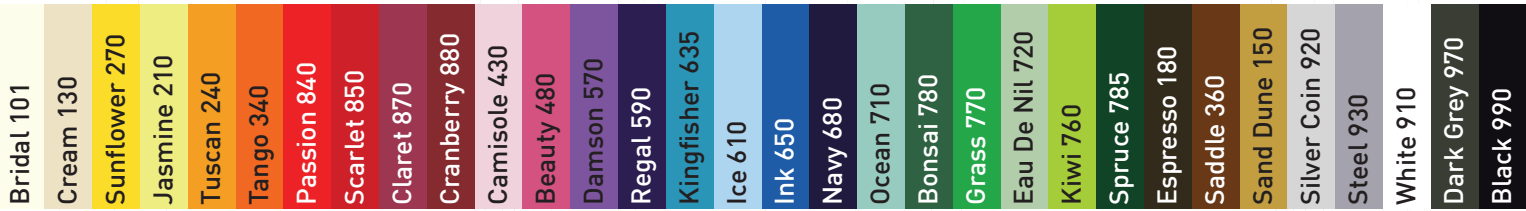
- Wet ink Rotary Print
Up to four colours.
- Foil Print
Up to three colours.
- Transfer Print
Full colour.
- Premium Raised Print
Up to two colours.



Special Colours

Special dye to match colours available subject to a minimum order quantity.

Primary Stock Colours



We hold these colours in stock in the widths specified under each quality.

These colours are planned into a two week dye cycle so should always be available from stock.

However if colours are unexpectedly exhausted they will be replaced within two weeks.

638 Double Sided Polyester Satin

Available in 3 mm, 5 mm, 7 mm, 10 mm, 12 mm, 15 mm, 20 mm, 25 mm, 38 mm, 50 mm.

608 Single Sided Polyester Satin

Available in 25mm, 38mm, 50mm.

668/665 Polyester Grosgrain

Available in 10 mm, 12 mm, 15 mm, 25 mm, 38 mm.

Widths available with longer lead times: 20mm. (This would be available within 4 weeks once ordered)

Secondary Stock Colours



These colours are planned into a three week dye cycle, so if out of stock they will be available within three weeks once ordered.

For widths with extended lead times these will be available within 4 weeks once ordered.

638 Double Sided

Widths available in these colours: 5mm, 10mm, 15mm, 25mm, 38mm.

Widths with extended lead times: 3mm, 7mm, 12mm, 20mm, 50mm.

608 Single Sided

Widths available in these colours: 25mm, 38mm.

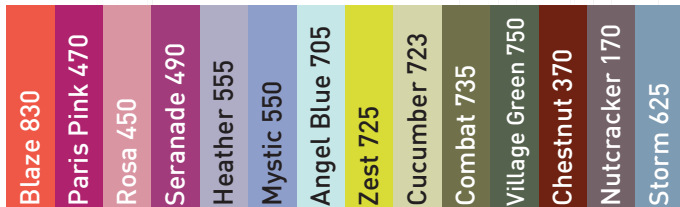
Widths with extended lead times: 50mm.

668/665 Grosgrain

Widths available in these colours: 15mm, 25mm.

Widths with extended lead times: 10mm, 12mm, 20mm, 38mm.

Made to order Items



All qualities and widths in these colours are considered as made to order items.

There may be stock in these items, however lead times may extend to 4 weeks once ordered.

Pack Information 638, 668, 665

Packs of	Widths		Approx Total Pack
4	10mm, 12mm, 15mm, 20mm, 25mm	4x 250m	1000m
2	38mm, 50mm	2x 250m	500m
1	3mm, 5mm, 7mm	1x 500m	500m

Pack Information 608

Packs of	Widths		Approx Total Pack
5	25mm, 38mm	5x 100m	500m
2	50mm	2x 100m	200m